

## VE-PF- In-Line Axial Exhaust Fan



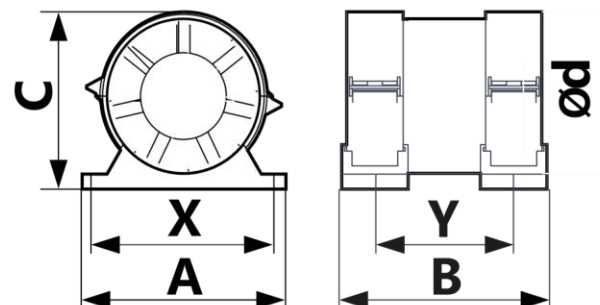
- For constant or periodic exhaust ventilation of bathrooms, kitchens and other domestic compartments .
- Used with plastic PVC ducts or flexible ducts.
- Exhaust or supply ventilation, depends on fan installation.
- Case and impeller are made from the high-quality ABS plastic, resistant to ultraviolet.
- The motor on sleeve bearings is installed. Does not require additional service.
- The motor is equipped with overheating protection.
- For VE-PF BB - motor on ball bearings with extended operational life (up to 40 000 operating hours) is installed.
- Fans of this series have different diameters of inlet and outlet pipes for the possibility of connection of grill of VE-RPKF series with flange of the corresponding diameter from the air intake side (if the fan is installed directly in the ventilation shati opening or in place of the existing ventilation grill).
- Degree of cover protection of an electric equipment against penetration of solid objects and water - IP24.
- IEC CB EN 60335-2-80 Standart Certified
- 5 Years Guarantee

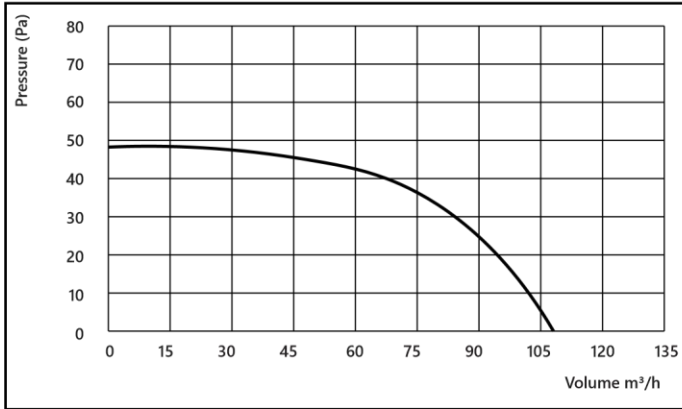
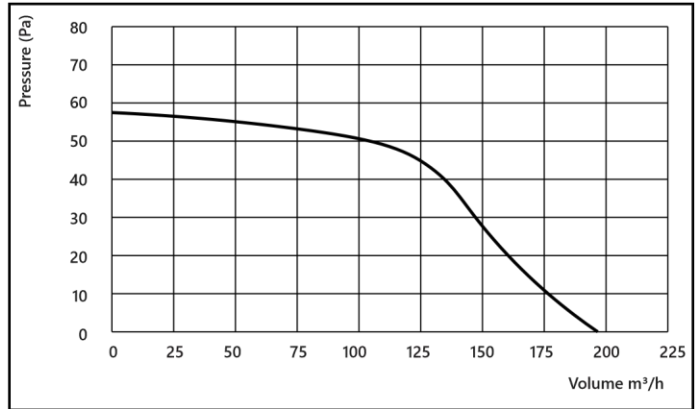
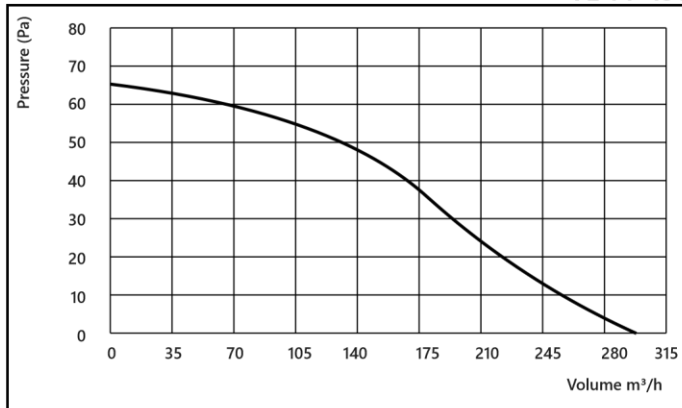


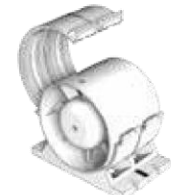
Fan Color	White	Motor Insulation Class	B Class
Impeller Material	High Structer ABS Plastic	Motor Bearing System	Sleeve Bearing
Body Material	High Structer ABS Plastic	Motor Enamelled Wire	100 % Copper
Working Temperature	-20 - +50 °C	Motor Protection	Over Heating Protection
Standards	IEC-CB-EN 60335-2-80	Motor Brand	Ventueope

Model	Diameter, mm	Power Watt	Capacity m <sup>3</sup> /h	Pressure Pa	Noise level, db(A)	Current Amper
VE100-PF	100	10	107	46	35	0,06
VE125-PF	125	12	190	56	36	0,07
VE150-PF	150	16	300	65	38	0,07

Model	A	B	X	Y	C	d
VE100-PF	138	139	122	94	119	104
VE125-PF	163	146	147	101	144	129
VE150-PF	198	154	182	104	179	164

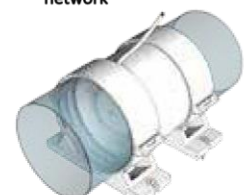


**VE-PF- In-Line Axial Exhaust Fan**
**Diagrams**
**VE-PF-100**

**VE-PF-125**

**VE-PF-150**

**Mounting**

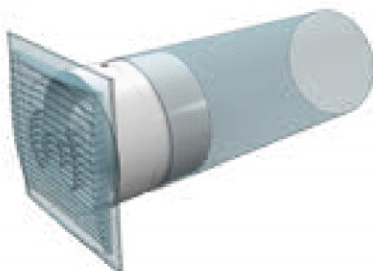
**1. Unpack the fan**

**2. Open covers of holders by pressing latches**

**3. Fix brackets of holders on mounting surface at Y distance (see the table of overall dimensions)**

**4. Execute a fan connection to the network**

**5. Install the fan in holders. The direction of a stream is shown according to an arrow on the fan case.**


Mounting of the fan with BB option in horizontally directed ducts is possible.


**VE-PF fan mounting with VE-VP air vent and duct bracket DSKP**

**VE-PF fan mounting with VE-VP air vent and VE-RSF grill**